



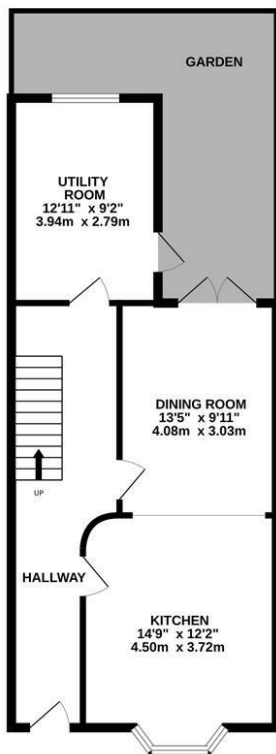
Mann Street, Hastings TN34 1SE

Offers in excess of £415,000



An exceptional three bedroom, THREE STOREY VICTORIAN HOUSE situated in a sought after and central setting in Hastings Town Centre. It's enviably placed just a short stroll from Alexandra Park, the beach, local shops and restaurants. CONVENIENCE TO LONDON is optimal as the house is a 6 minute walk away from the mainline railway station. The accommodation here enjoys a VERSATILE LAYOUT and has been RECENTLY REFURBISHED TO A HIGH STANDARD, yet it retains a wealth of original features including exposed floorboards which flow throughout. The lower floor houses a CONTEMPORARY KITCHEN/BREAKFAST ROOM with a central island and breakfast bar, the kitchen is open to the dining room creating a sociable space which is perfect for entertaining and there are double doors leading out to the courtyard garden at the rear. There is a separate utility and laundry room which also benefits from access out to the garden. On the first floor there is a BAY FRONTED LIVING ROOM, the third bedroom which is currently used as a study and a STYLISH BATHROOM with his and hers sinks, a freestanding bath and a large walk-in shower enclosure. The upper floor houses two further double bedrooms, both fitted with BUILT-IN WARDROBES and from the front of the property there are FAR REACHING VIEWS across the neighbouring rooftops. Positioned in an unrivalled location and being sold with NO ONWARD CHAIN this fantastic property is not to be missed.

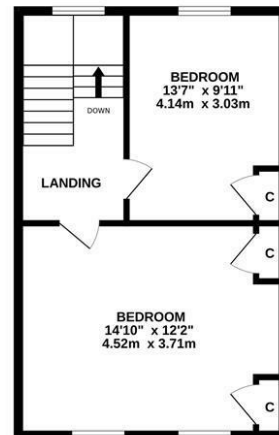
LOWER GROUND FLOOR
571 sq.ft. (53.0 sq.m.) approx.



GROUND FLOOR
571 sq.ft. (53.0 sq.m.) approx.



1ST FLOOR
447 sq.ft. (41.3 sq.m.) approx.



TOTAL FLOOR AREA: 1588 sq.ft. (147.6 sq.m.) approx.

Whilst every attempt has been made to ensure the accuracy of the floorplan contained here, measurements of doors, windows, rooms and any other items are approximate and no responsibility is taken for any error, omission or mis-statement. This plan is for illustrative purposes only and should be used as such by any prospective purchaser. The services, systems and appliances shown have not been tested and no guarantee as to their operability or efficiency can be given.

Made with Metropix ©2024

